

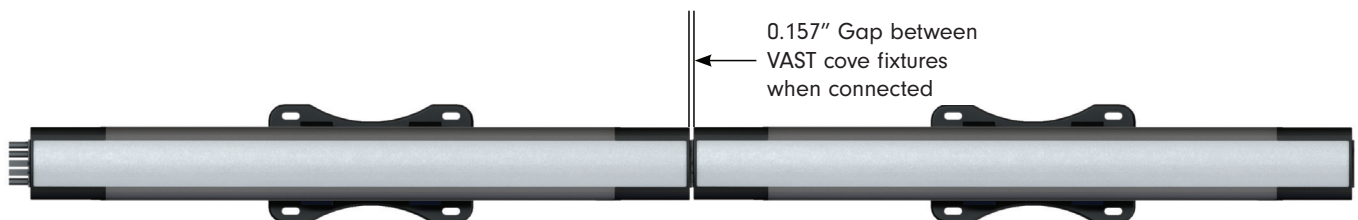
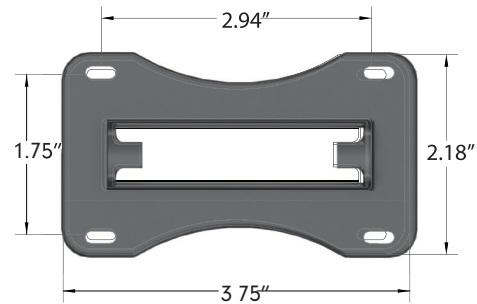
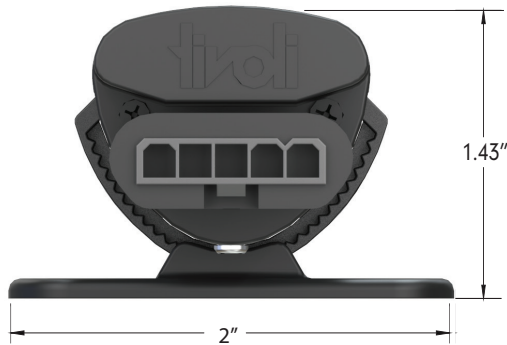
VASTCOVE PALETTE



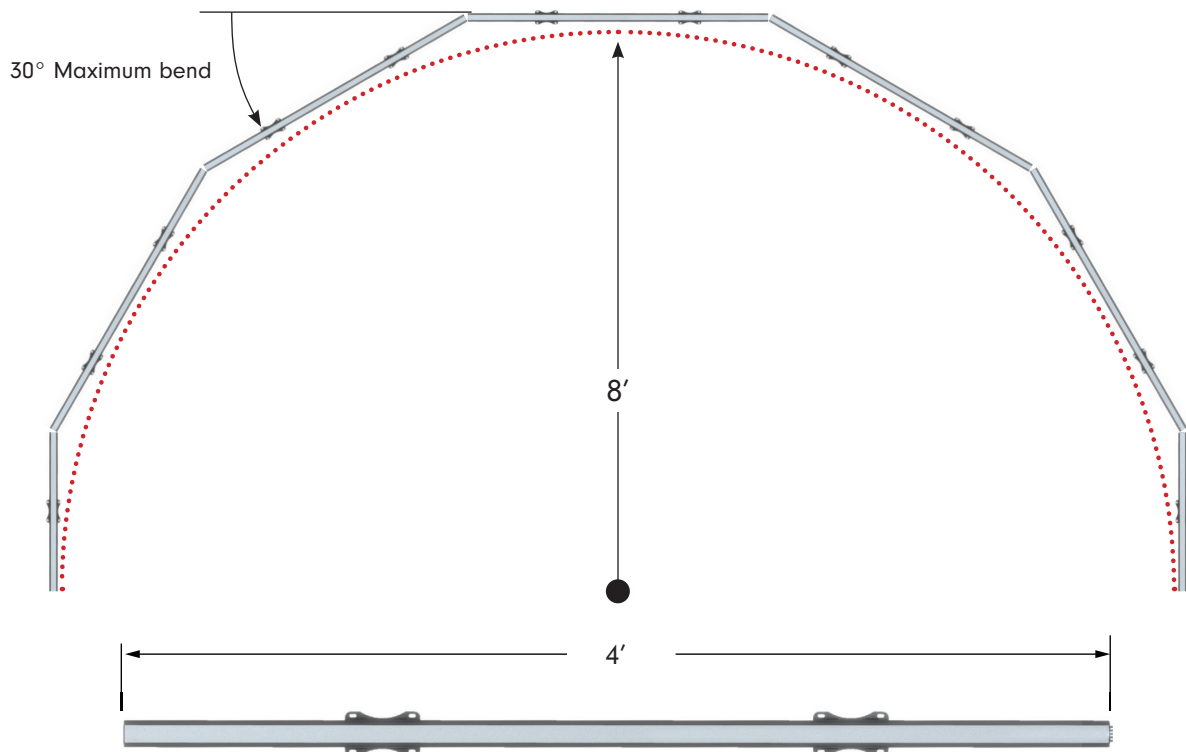
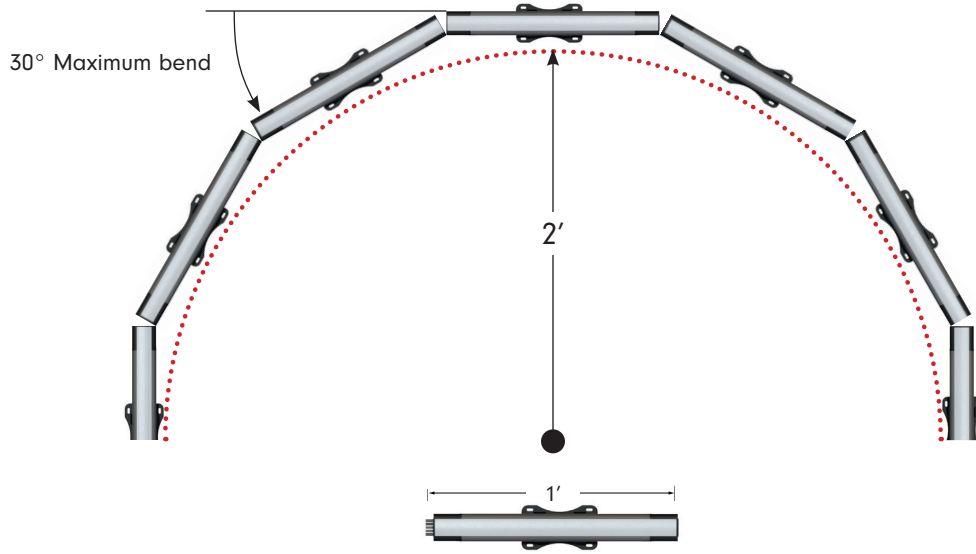
Project: _____ TYPE: _____

- RGB+W Cove light with dedicated white chip ranging from 27K, 30K, 35K, 40K, 53K to 60K
- DMX with RDM (Remote Device Management) or DMX with Auto Addressable feature
- Self-Ballasted (100-277V AC)
- Up to 450 lumens/ft (CCT dependent)
- Maximum Run up to 120'
- Flexible connectors accommodate curved applications
- Adjustable mounting bracket for desired angle
- For Dry/Damp location
- IP54 Rating
- 5 Year warranty

Dimensions



Radius Bend





Order Specification Guide

PRODUCT CODE	LED TYPE	COLOR	LENS	RGB+W LED COLOR	DIMMING OPTION	LENGTH
VAST		SG	OP			
VAST = VAST Palette Cove Light	SB = Standard Brightness HO = High Output	SG = Space Gray	OP = Opal	RGB27 = RGB+2700K RGB30 = RGB+3000K RGB35 = RGB+3500K RGB40 = RGB+4000K RGB53 = RGB+5300K RGB60 = RGB+6000K	01 = DMX/RDM 02 = DMX/Auto	1 = 1' 4 = 4'

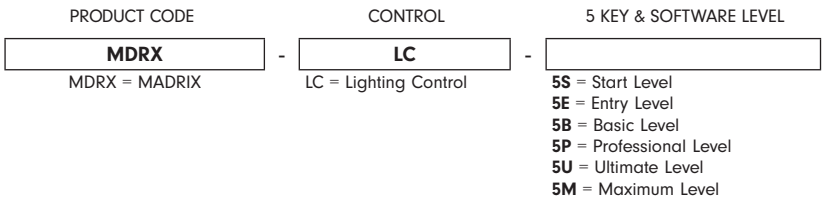
Specifications

Output (Standard) - 1' Unit						Output (Standard) - 4' Unit					
Color/CCT	White	RGB	Red	Blue	Green	Color/CCT	White	RGB	Red	Blue	Green
Lumens (lm/ft)	450.56	302.42	19.24	4.69	47.13	Lumens (lm/ft)	1864.75	1264.34	90.63	30.95	217.96
Efficacy (lm/W)	70.67	44.78	9.27	2.10	20.91	Efficacy (lm/W)	79.28	50.13	17.02	5.17	36.29
Measured Power (W/ft)	CF	CF	CF	CF	CF	Measured Power (W/ft)	CF	CF	CF	CF	CF
Listed Power (W/ft)	6					Listed Power (W/ft)	24				
Maximum Electrical Run	120'					Maximum Electrical Run	120'				

Output (High Output) - 1' Unit						Output (High Output) - 4' Unit					
Color/CCT	White	RGB	Red	Blue	Green	Color/CCT	White	RGB	Red	Blue	Green
Lumens (lm/ft)	1066	254	70.6	39.2	172	Lumens (lm/ft)	1066	254	71	39	172
Efficacy (lm/W)	88.83	21.17	5.88	3.27	14.33	Efficacy (lm/W)	75	33	25	14	61
Measured Power (W/ft)	CF	CF	CF	CF	CF	Measured Power (W/ft)	CF	CF	CF	CF	CF
Listed Power (W/unit)	12					Listed Power (W/unit)	48				
Maximum Electrical Run	60'					Maximum Electrical Run	60'				

Electrical	
Control	DMX5 512 (Resolution: 1 pixel/unit), RDM (Programable Resolution: 1 pixel/6", 12", 24", 48")
Dimming Range	DMX down to 1%
Input Voltage	100-277V AC 50/60Hz
Physical	
Mounting	Surface Mount with adjustable clip
Operating Temperature	-4°F ~ 149°F (-20°C ~ 65°C)
Storage Temperature	-13°F ~ 158°F (-25°C ~ 70°C)
Certification and Testing	
Certification	cULus, CE, RoHS
Rated Life	>60,000 hrs. @ 25°C
Environment	Dry/Damp Location
IP Rating	IP54

Key & Software Levels



MADRIX KEY
 A USB dongle unlocks the software's full output. You can freely switch between different PCs as it is not bound to a specific one. It only needs to be activated online once.

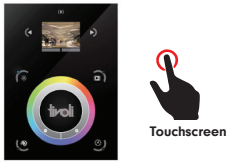
MADRIX 5 LICENSE UPGRADES
 You can easily upgrade your MADRIX 5 KEY to any higher license at any time, increasing the available output.

Level	START	ENTRY	BASIC	PROFESSIONAL	ULTIMATE	MAXIMUM
MADRIX 5 Order Code	MDRX-LC-5S	MDRX-LC-5E	MDRX-LC-5B	MDRX-LC-5P	MDRX-LC-5U	MDRX-LC-5M
DMX-Based Output						
DMX Channels	1,024	4,096	16,384	65,536	262,144	1,048,576
DMX Universe Example	2	8	32	128	512	2,048
RGB Voxels Example	341	1,365	5,461	21,845	87,381	349,525
DVI-Based Output						
DVI Voxels	4,096	16,384	262,144	1,048,576	2,097,152	2,097,152
Render Resolution (Pixel x Pixel)	64 x 64	128 x 128	512 x 512	1,024 x 1,024	2,048 x 1,024	2,048 x 1,024

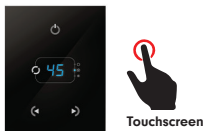


Cue™ and CuePro™ softwares are specifically designed for the TivoCUE™ in-wall DMX controls and includes an array of tools required by the latest DMX lighting fixtures. Intuitive, with easy-to-use effects that can be dropped into timelines, and multi-zone synchronization capabilities allow you to program a project effortlessly.

DMX Controls



TVOQ-10-XX-7
XX = BK (black), WH (white)
 1024 DMX channel, 500 scene,
 10 zone, glass touch screen



TVOQ-2-BK
 Black
 512 DMX channel, 99 scene



TVOQ-1-WH
 16 DMX channel, 16 scene, 4
 zone, glass touch screen



ARTNET-S-8-512
 8 Port universe Artnet to
 DMX interface, 4096 DMX
 channels programmable for
 playback and live support
 (Online or Offline option)

Accessories



VAST-T-CONN-CAT
T Connector for DMX CAT5/6
RJ45 female connection



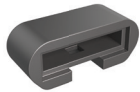
VAST-T-CONN-SIG
T Connector 6' Power Cable
and 6' 0-10V Signal Cable



JUMPER-XLR3P-X
Jumper Cable 3-PIN XLR
X = 5, 10, 25 (lengths in ft)



VAST-JUMPER-5P-X
X = 1 (1'), 5 (5')
Jumper, 5-Pin Connection



VAST-5P-EC
5-Pin End Cap



VAST-BAFL-1
Black Vast baffle 1' length



VAST-CHAN-BLK-6.5
Vast straight channel silver 6.5'
length

Network Hardware



ARTNET-L-X-512
X = 8, 16 (ports)
8 or 16 Port universe Artnet to
DMX interface
16 Port 8192 DMX channels
8 Port 4096 DMX channels
(Online only)



NTG-SWI-XXPT
XX = 8 (8 ports), 16 (16 ports)
NETGEAR 16 port gigabit
Unmanaged Switch



DMX-SPLT-8
DMX Splitter
8 Ports of DMX 512,
RJ45 and 3-pin hardwire
connection



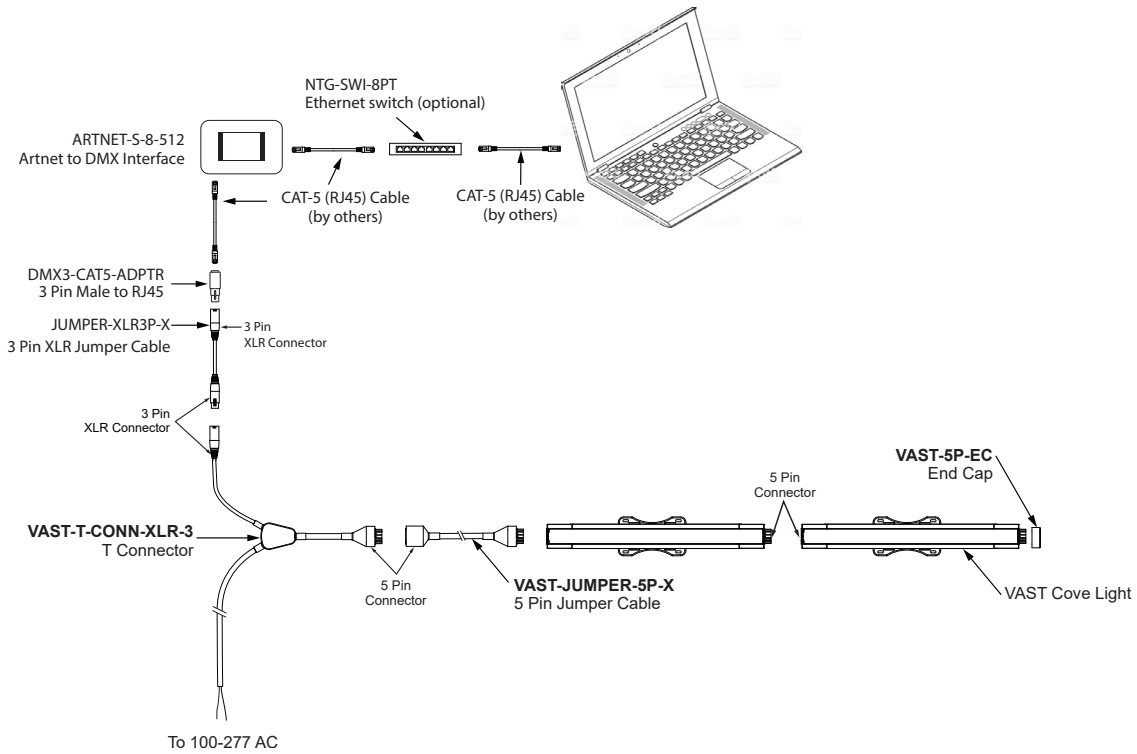
DMX3-CAT5-ADPTR
DMX Adapter
3-pin XLR Female to RJ45

Note: If the number of DMX fixtures exceed 32 units, a DMX Splitter is required. A DMX splitter mainly splits and duplicates an incoming DMX signal into several DMX output signals. Each output signal is basically the same. At the same time, the DMX splitter amplifies the signal to ensure the signal strength.

Wiring Diagram - Offline

ARNET-S (Stand Alone)

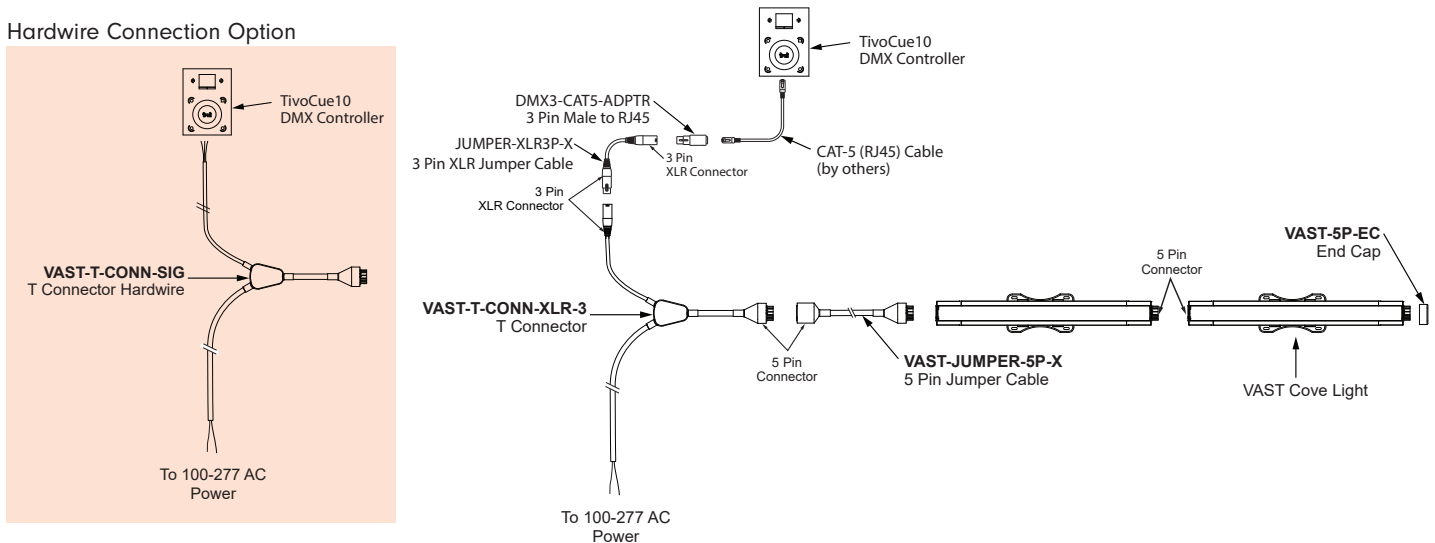
Programmed via MADRIX software and recorded directly to an ARNET-S interface for media applications and performance. This is a stand-alone feature with no need for network support by software (MADRIX) once recorded to the interface (ARNET-S). Please refer to ARTNET-S-8-512 User Manual for additional information.



TivoCUE (Stand Alone)

Programmed via CUE software and recorded to a MicroSD card for data transfer into TivoCUE control. This is a stand-alone feature with no need for network support by software (CUE PRO) once recorded and transferred to in-wall DMX control hardware (TivoCUE). Please refer to TivoCue 10 User Manual for additional information.

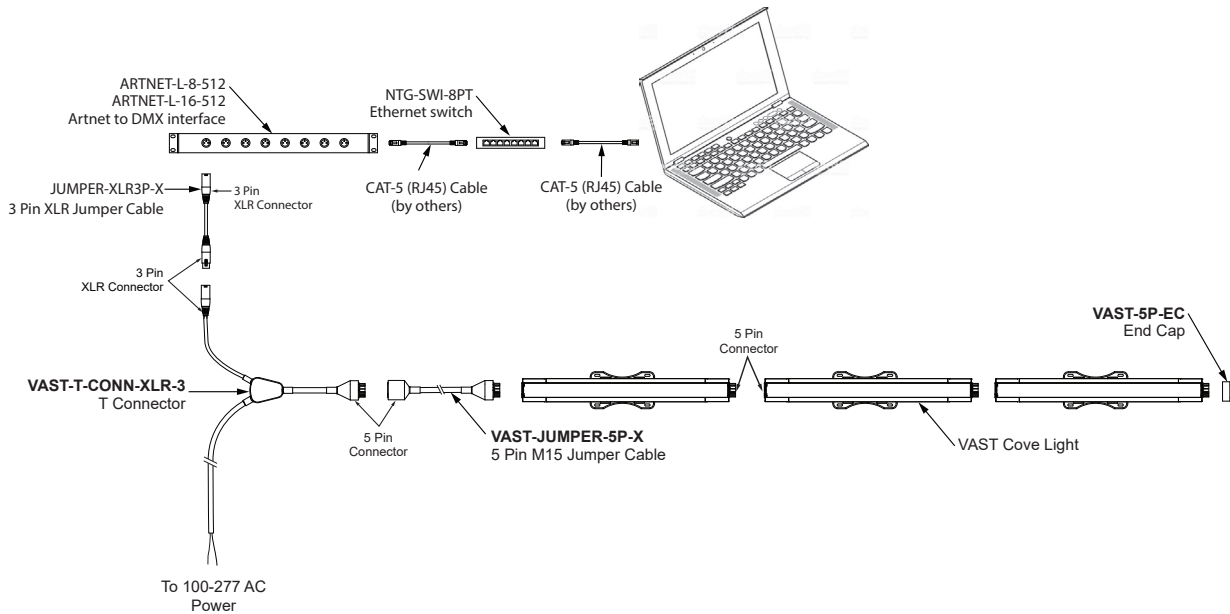
Hardwire Connection Option



Wiring Diagram - Online

LIVE CONFIGURATION

This is a live control performance setup. Widely used for concerts or performance-based manipulation. Use of a live network is necessary for communication between MADRIX software and fixture.



Tivoli Commissioning Service

Tivoli’s DMX Commissioning service involves the setup and configuration of our DMX lighting and control system, ensuring the seamless integration of our lighting fixtures with the specified DMX Control system ordered.

For more information about commission service, contact:
 sales@tivoliusa.com
 714-957-6101 (Engineering Tech Support)

Tivocue Wall Controllers (Default Scenes: White, Red,Green, Blue, Light Blue, Purple, Pink, Dim White, Yellow, Cool Cycle, Warm Cycle, All Cycle, Rainbow Scroll, Blackout)	
TVOQ-REM-COMM-1	Remote DMX commissioning for TIVOCUE 2 and 10 dmx wall controller. Pixel mapping/control is not offered for remote commissioning
TVOQ-ONS-COMM-1	Onsite DMX commissioning for TIVOCUE 2 and 10 dmx wall controller (est. 2 days)
ARTNET-S-8-512 (Default Scenes: White, Red,Green, Blue, Light Blue, Purple, Pink, Dim White, Yellow, Cool Cycle, Warm Cycle, All Cycle, Rainbow Scroll, Blackout)	
ARTNET-S-REM-COMM-8	Remote DMX commissioning for artnet s recorder up to 8 universes. Pixel mapping/control is not offered for remote commissioning
ARTNET-S-ONS-COMM-8	Onsite DMX commissioning for artnet s recorder up to 8 universes (est. 3 days)
MADRIX DMX SYSTEM	
DMX-COMM-2U-MDRX	Onsite commissioning for mardix, up to 2 universes (est. 3 days)
DMX-COMM-8U-MDRX	Onsite commissioning for mardix, up to 8 universes (est. 3 days)
DMX-COMM-16U-MDRX	Onsite commissioning for mardix, up to 16 universes (est. 4 days)
DMX-COMM-24U-MDRX	Onsite commissioning for mardix, up to 24 universes (est. 4 days)
DMX-COMM-32U-MDRX	Onsite commissioning for mardix, up to 32 universes (est. 5 days)
32+ UNIVERSE	Contact factory